

# PrimeTimes

OCTOBER 09

## MISSION STATEMENT:

Prime Financial Credit Union is dedicated to improving the financial well-being of its members by providing innovative, competitive, and high quality services and products.

*Financial news you can use.*

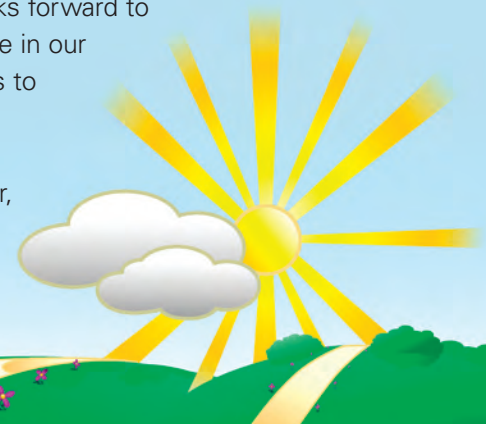
## Creating a brighter future – together

This year has brought challenges to our community and your Credit Union in the form of high unemployment and decreasing home values. However, there are encouraging signs in the economic indicators pointing towards stabilization. The management team at Prime Financial Credit Union is committed to making appropriate and timely decisions to guide the Credit Union through these tough times and thrive in our community well into the future.

Prime Financial is here to stay and committed to “doing the right thing.” Each and every day, the team here works diligently to assist members who may be struggling to make ends meet. We explore financial options based on an individual’s situation, encourage members to take advantage

of our knowledgeable debt counselors, and explain how to maximize deposit insurance coverage.

Prime Financial Credit Union, Wisconsin’s first state chartered credit union, looks forward to helping our members thrive in our community for generations to come. Thank you for your continued commitment to your Credit Union. Together, we’re creating a brighter future.



## Your Search for a Great Loan Rate is Over

Need financing for a new or used vehicle? Look no further! PFCU is offering great rates on new or used autos, trucks, campers and boats. Contact us to get pre-approved today!



[www.primefinancialcu.org](http://www.primefinancialcu.org)



Loans as low as  
**4.99% APR\***  
Terms up to 5 years

To apply today, please contact us at  
414.486.4500 or apply online at  
[www.primefinancialcu.org](http://www.primefinancialcu.org)

\*APR=Annual Percentage Rate. Model year must be 2005 or newer. The credit union reserves the right to change any conditions of programs or to withdraw them without prior notice. Rates subject to change. Borrowers must qualify for rate and loan. To refinance your existing PFCU loan, you must either: (1) extend the term by six months or (2) add \$500.00 to the balance.

## Blood Drive a BIG Success

**THANK YOU** to the members and employees who generously donated to save lives for Prime Financial's 2nd Annual Community Blood Drive on August 12th! The American Red Cross collected 23 units. **Each unit saves 3 lives!**



**American Red Cross**

## VISA® Gift Cards-The Perfect Gift for the Holiday Season

Not sure what to give the friend or relative who has everything? Give the gift of convenience! A Visa Gift Card is the ideal choice for all of your gift-giving occasions. The benefits are endless including:

**Flexibility:** Recipients can buy what they want, when they want—whether shopping online, in person, or by phone.

**Protection:** It's safer than cash with the protection and security you've come to expect from Visa.

**Choice:** Visa Gift Cards can be used everywhere Visa debit cards are accepted, which means millions of places to choose the perfect gift! Because it's a prepaid card, spending is limited to the amount of money placed on the card for recipients.

Visit one of our branch locations and ask your friendly Credit Union representative how you can purchase your Visa Gift Card today!



**Phone:**  
414.486.4500

**Toll Free:**  
800.835.9680

**Branch Locations**

**Downtown**

1010 N. Water St.  
Milwaukee, WI 53202  
Fax: 414.271.0217

**Zeidler Municipal Building**

841 N. Broadway  
Milwaukee, WI 53202  
Fax: 414.273.1195

**Auto Banking Center**

10605 W. North Ave.  
Wauwatosa, WI 53226  
Fax: 414.774.4353

**Oklahoma Avenue**

1923 W. Oklahoma Ave.  
Milwaukee, WI 53215  
Fax: 414.385.5503

**Swan Road**

4878 N. Swan Rd. (92nd St.)  
Milwaukee, WI 53225  
Fax: 414.527.3186

**Cudahy**

5656 S. Packard Ave.  
Cudahy, WI 53110  
Fax: 414.486.4510

**Two Rivers**

1819 Washington St.  
Two Rivers, WI 54241  
Fax: 920.793.3859

**Pewaukee**

1611 Silvermail Rd.  
Pewaukee, WI 53072  
Fax: 262.547.7583

**Service Centers**

**Greenfield**

6126 W. Layton Ave.

**Milwaukee**

6402 W. Brown Deer Rd.

**Racine**

Gateway Technical College  
1001 S. Main St., Rm. R103

**Waukesha**

1501 E. Sunset Dr.

For branch hours  
please call or visit  
our website.

We do business in accordance with the Federal Fair Housing Law and the Equal Credit Opportunity Act.

Your savings are federally insured for up to \$250,000 and IRAs are insured separately for up to \$250,000 by the National Credit Union Administration, an agency of the U.S. Government.



PFCU is a state chartered credit union.



With the help of our generous members, PFCU had colossal success collecting more than 1,040 toys last year for Toys for Tots! 2009 marks our 13th year as a collection



location for the Toys for Tots campaign. Our goal is to place as many toys as possible in the arms of needy children. Beginning Monday, November 16th, a collection box will be set up at each PFCU location. We will collect unwrapped NEW toys, which will be distributed to the children in our community. Thank you for giving them the opportunity to open a gift this holiday season!

## Holiday Closings

**Columbus Day**  
Monday, October 12

**Thanksgiving**  
Thursday, November 26  
Friday, November 27

**Christmas Eve**  
Thursday, December 24  
(Closed at Noon)

**Christmas Day**  
Friday, December 25

**New Year's Eve**  
Thursday, December 31  
(Closed at Noon)

**New Year's Day**  
Friday, January 1



PrimeTimes is published quarterly and exclusively for members of PFCU. Inquiries and comments can be mailed to: Editor/PrimeTimes, 5656 S. Packard Ave., Cudahy, WI 53110